



ROTARY UNIONS - GIUNTI ROTANTI

English version  |  Versione italiana



R
series

www.girol.it/br/

R

ROTARY UNIONS FOR HIGH SPEED

Giunti rotanti ad alta velocità

R series Rotary Unions have been originally designed to control OMPI clutches and can be applied to any machinery that requires the passage of compressed air, vacuum, methane and other types of gas.

They are mainly installed on industrial presses and used in packaging and converting sectors. They are equipped with ball bearings which allow excellent performance at high rotation speediness up to 5,000 rpm.

The standard version is supplied with BSP thread but we can provide different threading upon request (NPT, metrics, ecc...).

I giunti rotanti Girol della Serie R, originariamente progettati per comandare le frizioni OMPI di nostra produzione, possono essere usati in qualsiasi applicazione dove sia richiesto il passaggio di aria compressa, vuoto, metano e altri tipi di gas. Vengono installati principalmente su presse industriali, nel settore packaging e converting. Montano cuscinetti a sfera che consentono eccellenti prestazioni ad alte velocità di rotazione fino a 5.000 giri/min. Le filettature sono GAS cilindriche, su richiesta possiamo fornire filettature di standard differenti (NPT, Metriche, ecc.)

FLUIDS

Air
Gas
Vacuum

ROTATION

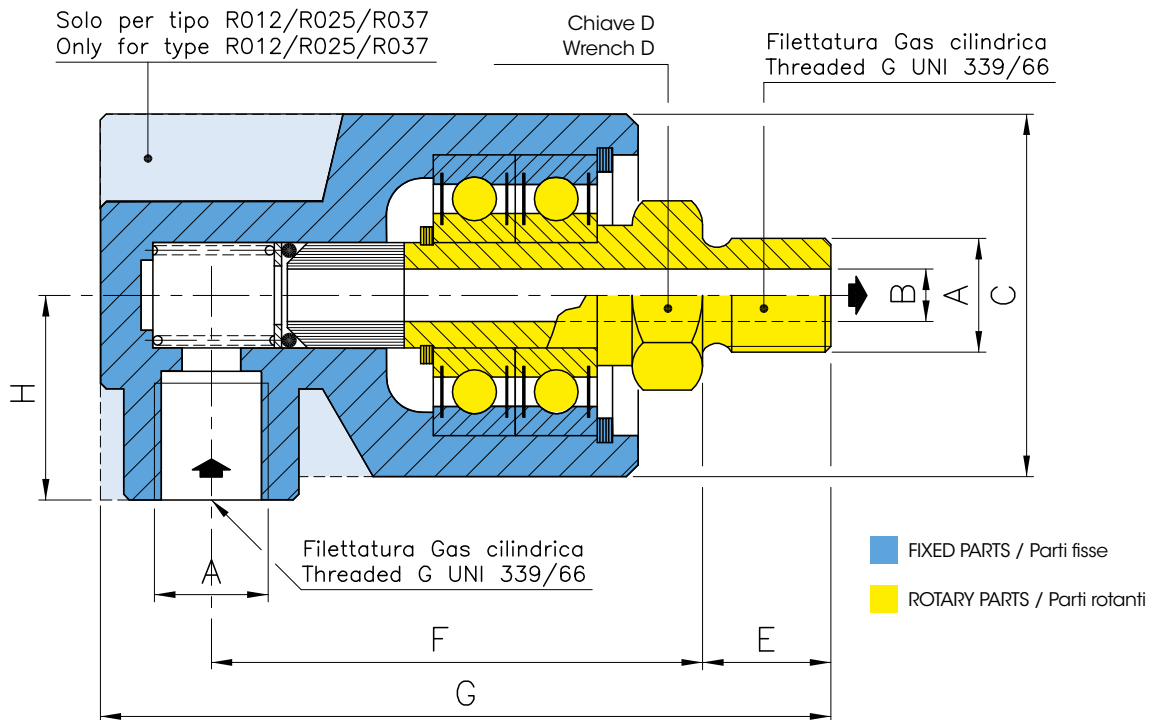
5,000 rpm



MAX PRESSURE

11 bar

play video
on Youtube



For left-hand threads, the third letter of the code changes by replacing "D" with "S".
Per filettature sinistre, la terza lettera del codice varia sostituendo "D" con "S"

CODE Codice	A	B	C	D	E	F	G	H	WEIGHT peso	RPM g/min
RMD012-GB4GR	1/8" BSP	4,5 0,177	35 1.378	14	11 0,433	42 1,654	63 2,480	15 0,591	0,2 kg 0,5 lb	3.000
RMD025-GB4GR	1/4" BSP	7 0,276	40 1.575	17	14,5 0,571	50 1,969	76 2,992	17,5 0,689	0,3 kg 0,66 lb	2.500
RMD037-GB4GR	3/8" BSP	10 0,394	48 1.890	22	16 0,630	60 2,362	90 3,543	20,5 0,807	0,43 kg 0,95 lb	2.000
RMD050-GB4GR	1/2" BSP	12,5 0,492	50 1,969	27	18 0,709	80 3,150	111 4,370	30 1,181	0,75 kg 1,65 lb	1.500
RMD075-GB4GR	3/4" BSP	17 0,669	56 2,205	32	20 0,787	86 3,386	122 4,803	36 1,417	0,96 kg 2,12 lb	1.000
RMD100-GB4GR	1" BSP	22 0,866	65 2,559	41	23,5 0,925	98 3,858	138 5,433	40 1,575	1,4 kg 3,09 lb	500
RMD125-GB4GR	1"1/4 BSP	32 1,253	90 3,543	50	29 1,141	108 4,251	169 6,471	53 2,086	1,9 kg 4,19 lb	500
RMD150-GB4GR	1"1/2 BSP	38 1,496	95 3,740	55	31 1,220	117 4,606	183 7,204	58 2,283	2,2 kg 4,85 lb	500

General assembling warnings

- 1) Connections to the joint body must always be made using flexible hoses.
- 2) Supply lines to the joint and cylinders must be completely clean and free of chips, welding residues, or other contaminants.
- 3) Avoid operating the joint under more than one maximum service condition simultaneously.

Avvertenze generali di montaggio

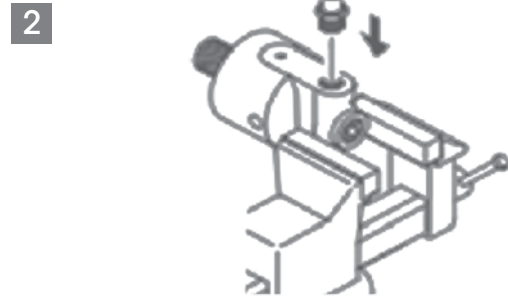
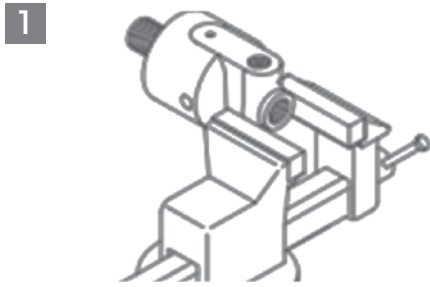
- 1) I collegamenti al corpo del giunto devono essere realizzati esclusivamente con tubi flessibili.
- 2) Le tubazioni di adduzione al giunto e ai cilindri devono essere perfettamente pulite, prive di trucioli, residui di saldatura o altre impurità.
- 3) Evitare l'utilizzo del giunto con più di una condizione massima di esercizio contemporaneamente.



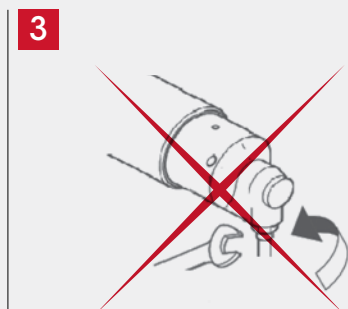
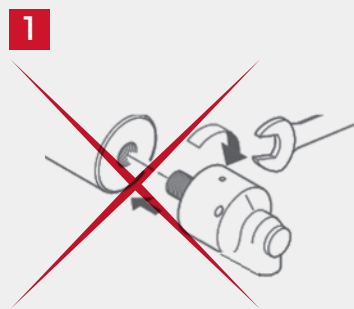
INSTALLATION

installazione

HOW TO INSTALL // COME INSTALLARE



HOW TO **NOT** INSTALL // COME **NON** INSTALLARE



PIPES MUST BE FLEXIBLE!
ITUBI DEVONO ESSERE FLESSIBILI



HEADQUARTERS

Girol srl, via San Carlo 8, 20847 Albiate (MB), Italy
Tel: +39 0362-905204 | Fax: +39 0362-992972 | E-mail: info@girol.it
www.girol.it

RETAILERS

Open retailers
map

EUROPE

Finland

LOPITAL OY
Tel: +358 040 366 0376
info@lopital.fi

France

ROSS FRANCE (FORMERLY DIMAFLUID)
Tel: +33 1 49 45 65 65
sales@rossfrance.com

Germany

GIROL GERMANY
Tel: +49 160 500 7299
info@girol.eu

FAMAGA GROUP OHG
Tel: +49 7731 919 300
ft@famaga.de

Greece

TECNOPNEUMATIC S.A.
Tel: +30 210 347 0500
info@tecnopneumatic.gr

Hungary

MONOJET IPARTECHNIKA KFT.
Tel: +36 70 369 5393
kapcsolat@monojet.hu

Poland

INTROX SP. 200
Tel: +48 61 651 5331
tk@introx.biz

Czech Republic

KOPATECH S.R.O.
Tel: +420 797 976 543
kopatech@seznam.cz

Romania

AGMANN TECHNOLOGY S.R.L.
Tel: +40 31 229 7445
info@agmann.ro

Russia

EUROPROMPRODUCT 000
Tel: +7 343 345 6663
solid71@mail.ru

Slovenia

ALEŠ KOKOL
Tel: +386 31 568 950
a.kokol@agencija-ka.com

Spain

LIDERING S.A.
Tel: +34 934 840 4422
info@lidering.com

Switzerland

TICINO MECHANICS ENGINEERING & TRADING SAGL
Tel: +41 79 198 6477
igcp@ticinomechanics.ch

UK

INDUSTRIAL CLUTCH PARTS LTD
Tel: +44 16637 34627
sales@industrialclutch.com

Ukraine

INVEST-M ENGINEERING LTD
Tel: +38 050 500 2805
investm1@mail.ru

ASIA

China

SHANGHAI WIND CO LTD
Tel: +86 21 3990 0269
toni@ompisrl.com.cn

UAE

AL MAIMOON TRADING CO. LLC
Tel: +971 55 607 8650
agency@almaimoon.ae

India

RKB INTERNATIONAL
Tel: +91 661 250 0141
info@rkbinternational.com

Indonesia

PT. SUMITECH
Tel: +62 21 5575 5636
h.sumitaro@pt-sumitech.com

Turkey

GRT MAKİNA SANAYİ TİCARET LİMİTED ŞİRKETİ
Tel: 0552 667 66 16 - 0 543 317 99 66
ahmet.kocaturk@girolturkey.com

AMERICA

Brazil

ARTEN FREIOS & EMBREAGENS
Tel: +55 11 5594 8333
arten@arten.com

Ecuador

BEARLSA
Tel: +593 9 932 367 93
dcosta@beralsa.com

AFRICA

Morocco

AFRIC ROULEMENT
Tel: +212 522 407 010
import@africroulement.com